

Add-on for

XPLANE
10



aerosoft™

AIRPORT DUSSELDORF

MANUAL



Developer:	Thomas Hirsch (German Airports Team), Aerosoft GmbH
Manual:	Thomas Hirsch, William Lennox, Raphael Jakob
Installation:	Andreas Mügge

Copyright: © 2013/ **Aerosoft GmbH**
Airport Paderborn/Lippstadt
D-33142 Bueren, Germany
Tel: +49 (0) 29 55 / 76 03-10
Fax: +49 (0) 29 55 / 76 03-33

E-Mail: info@aerosoft.com
Internet: www.aerosoft.de
www.aerosoft.com



a e r o s o f t™

All trademarks and brand names are trademarks or registered of their respective owners. All rights reserved. / Alle Warenzeichen und Markennamen sind Warenzeichen oder eingetragene Warenzeichen ihrer jeweiligen Eigentümer. Alle Urheber- und Leistungsschutzrechte vorbehalten.



Airport Dusseldorf

Manual

Add-on for

X-Plane 10

Content

Starting Off	5
System Requirements.....	5
Copyright	5
Credits	6
Installation and Removal	6
How to Remove the Scenery Under Mac	6
Display Setting X-Plane	7
The Airport	8
General Information.....	8
Technicals	9



Starting Off

System Requirements

To fully enjoy the scenery „Airport Dusseldorf“ we recommend the following:

- X-Plane 10.11 or X-Plane 10 – Europe Edition
- Operating system: Windows XP (SP3)/Vista/7/8, Mac and Linux
- 2.6 GHz processor (Dual Core i5/i7 processor or equivalent recommended)
- RAM: 2 GB (4 GB recommended)
- 3D graphics card with min. 512 MB (1GB or 2GB recommended)

Copyright

This software, the manual, documentation, video images and all the related materials are protected by copyright laws. The software is licensed, not sold. You may install and run one copy of the software on one computer for your personal, non-commercial use. The software, the manual and all related materials must not be copied, photocopied, translated, reverse engineered, decompiled or reduced to any electronic medium or machine legible form, neither completely nor in part.

Credits

We would like to say thank you to all people supporting us to create this scenery project for X-Plane 10.

Special thanks also go to CGtextures with their comprehensive collection of textures.

We would also like to thank all beta testers, that make sure the product is available in the actual quality.

Aerosoft GmbH

April 2013

Installation and Removal

Installation is simple. Start the exe file you downloaded and follow the instructions on your screen. Make sure X-Plane is closed and we do advise you to reboot your system before installing. Make sure you are logged on as Administrator on the machine! Removal should never be done manually but only using the software removal applet you will find the Windows Control panel.

How to Remove the Scenery Under Mac

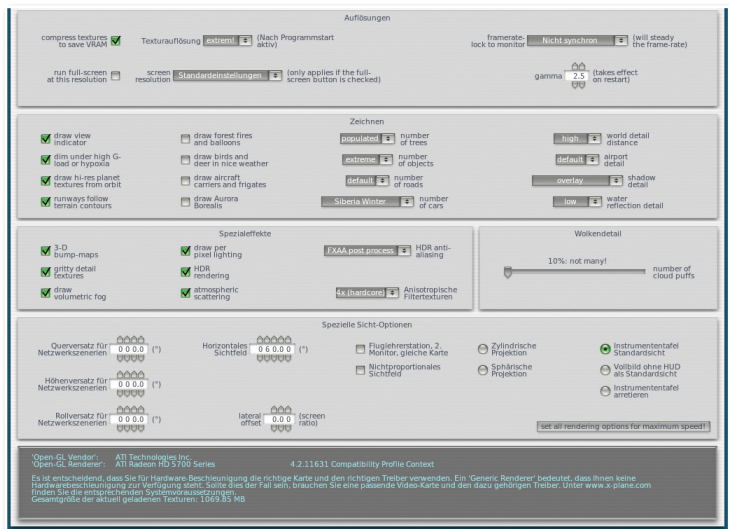
For the de-installation under Mac, please go into the directory „X-Plane 10\Custom Scenery\Aerosoft - EDDL Airport Dusseldorf_Airport Dusseldorf_installation\“ and execute the file „Change Airport Dusseldorf Installation\“ and select the option „Uninstall Product“.



Display Setting X-Plane

We advise you to set your rendering options to low or medium settings first. If you experience good framerates you can increase the settings for a better graphical experience. In our tests we came to the conclusion that the following settings gave us a reasonable framerate and very good visual experience with our test PCs and Macs.

Note: To be able to see illuminations on the ground make sure to activate "HDR rendering".



The Airport

General Information

Dusseldorf International Airport is the largest airport in North Rhine-Westphalia, Germany, and the third largest airport in Germany in terms of passenger handling. Starting off in 1927 it has steadily grown and today it is an important international hub for the largest metropolitan area in Germany, the Ruhr Area. It has got a great infrastructure with connections to the railway and motorway systems. It also serves as a hub for Air Berlin and Lufthansa, Germany's biggest airlines with both of them offering 300 daily flights. All in all the airport handles approx 750 daily take-offs and landings to more than 180 worldwide destinations. Each year more and more intercontinental flights to North-America and Asia are added to the schedule. The airport itself has two parallel runways and 107 parking positions for the more than 70 airlines visiting Dusseldorf. It is able to handle the new superjumbo Airbus A380 aircraft. On 12th November 2006, the first A380 landed in Düsseldorf as part of a Lufthansa promotion flight. And if you're looking for the highest German control tower, well..., you'll find it here.



Technicals

Identification	Düsseldorf International
ICAO-Code	EDDL
IATA-Code	DUS
Elevation	42 m / 147 feet
Position	N 51 16.86 E 06 45.44
Runway 05R/23L	3000 x 45 m (9842 x 148 ft) Beton
Runway 05L/23R	2700 x 45 m (8858 x 148 ft) Beton

Frequencies

TWR 1	18.300
GROUND	121.900
ATIS	123.775

Navigational Aids

VORDUS	115.15
ILS RWY 05R	111.50
ILS RWY 23L	109.90
ILS RWY 05L	109.50
ILS RWY 23R	109.30

XPLANE 10

AIRPORT HAMBURG



Set course to the oldest German airport and enjoy the richness of detail in X-Plane. All buildings, correct layout of the runways, taxiways and lightings plus all navigational aids are included. High resolution aerial images complete the astounding visuals.



Visit Our Online Shop:

ADD-ONS



ATR 72-500

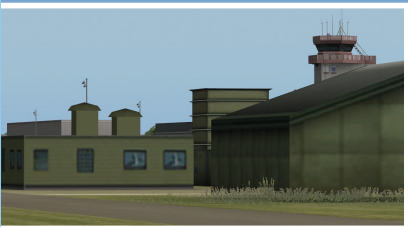


Features

- Accurate flight model
- Detailed and fully animated exterior model
- HD textures with normal maps
- High frames per second
- Liveries available: Air Austral, Aer Lingus, Binter, China Southern



AIRPORT FRANKFURT-HAHN



The airport includes all buildings and airport institutions. Additional details and various scenery effects create an absolutely real feeling.



www.aerosoft.com

CITYBUS SIMULATOR MUNICH



aerosoft™



29.99€



www.aerosoft.com